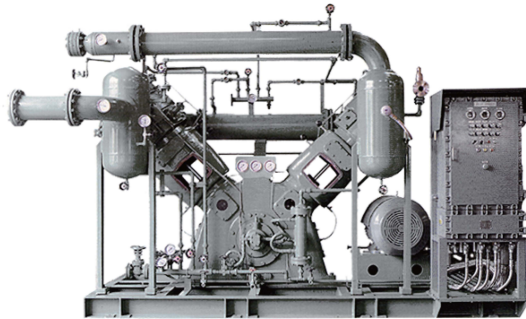


# HIGH-PRESSURE

Based on the Joy series design, featuring additional upper cylinders.  
Available from 50 HP to 300 HP.

## Specification

- ✓ Motor power : 50 - 300 HP
- ✓ Air Delivery : 3.7 - 22 m<sup>3</sup>/min
- ✓ Pressure : 30 - 40 kg/cm<sup>2</sup>
- ✓ Revolution : 402 - 560 RPM
- ✓ Cooling : Water Cooled



## Features

- ✓ Oil-lubricated or oil-free configurations can be manufactured upon request.
- ✓ The automatic unloading system allows capacity control.
- ✓ The oil tank is located at the lower part of the crankcase.
- ✓ The safety system enables unattended operation.
- ✓ The lubricant in the crankcase is cooled by a separately installed oil cooler.
- ✓ The crosshead guide is designed to allow easy maintenance.
- ✓ High-quality self-lubricating rings significantly extend piston ring service life.

Piston Type (High Pressure)

Working Pressure 30kg/cm<sup>2</sup>

Model	Piston Displacement	Revolution	Motor Power	Piping Size : mm	
	m <sup>3</sup> /min			RPM	HP
HVC-50H30P	4.93	402	50	80	25
HVC-75H30P	7.33	420	75	100	32
HVC-100H30P	10	456	100	125	40
HVC-150H30P	14.66	514	150	150	50
HVC-200H30P	20	522	200	150	65
HVC-250H30P	25.33	535	250	200	65
HVC-300H30P	29.33	560	300	200	65

Piston Type (High Pressure)

Working Pressure 40kg/cm<sup>2</sup>

Model	Piston Displacement	Revolution	Motor Power	Piping Size : mm	
	m <sup>3</sup> /min			RPM	HP
HVC-50H40P	4.71	420	50	80	25
HVC-75H40P	7	401	75	100	32
HVC-100H40P	9.55	493	100	125	40
HVC-150H40P	14	491	150	150	40
HVC-200H40P	19.1	499	200	150	50
HVC-250H40P	24.2	512	250	200	50
HVC-300H40P	28	535	300	200	65